

Kenton C. Ward, CFM
Surveyor of Hamilton County
Phone (317) 776-8495
Fax (317) 776-9628

Suite 188
One Hamilton County Square
Noblesville, Indiana 46060-2230

Map Correction-Field Verification

Drain Number: #353

Drain Length: 14,877

Drain Name: William P. Bennett Drain

Change +/- : 682

Date: 1-25-2017

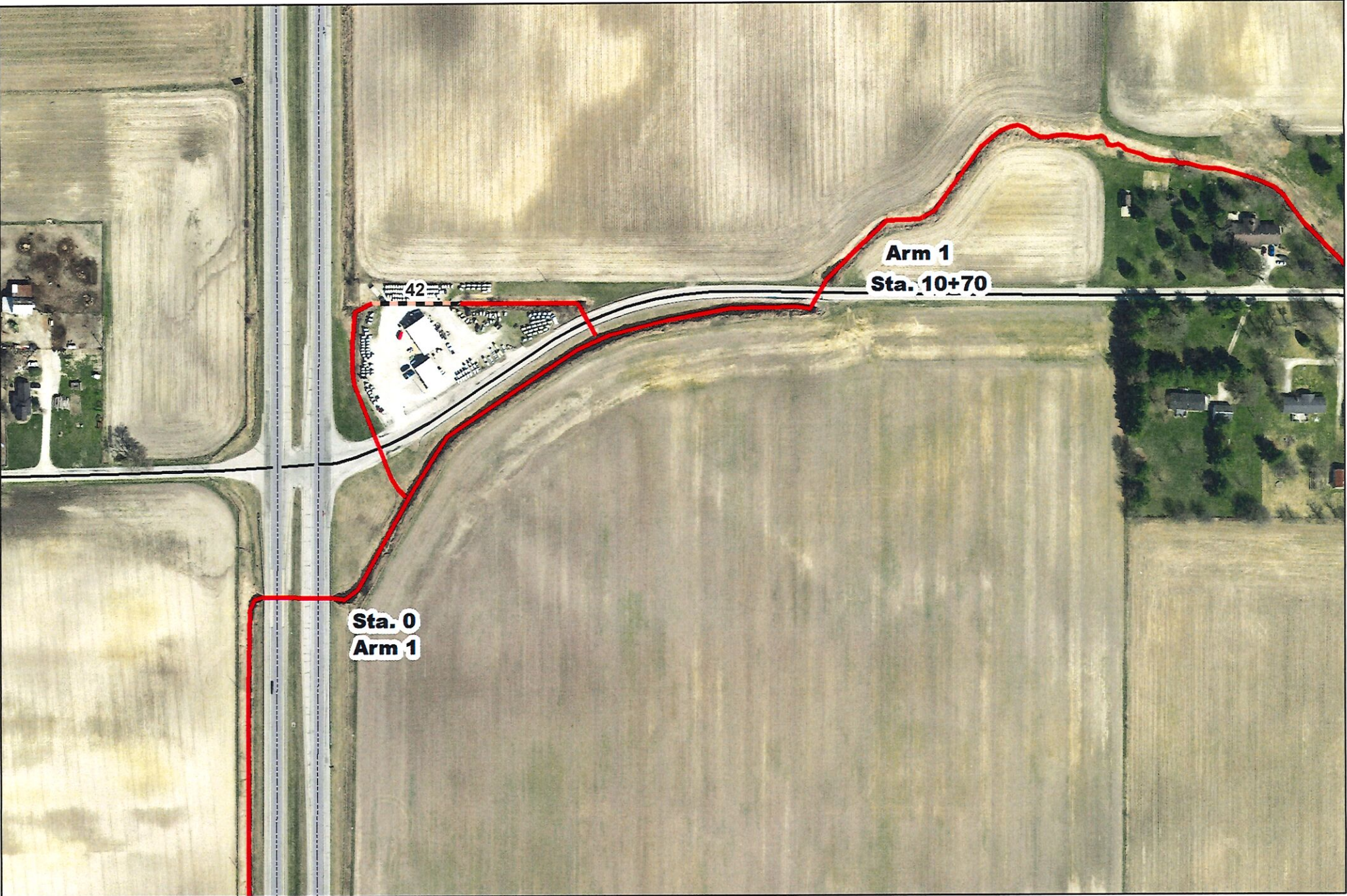
New Length: 15,559

Verified By: SLM

Notes & Sketch: See attached maps.

The William P. Bennett Drain per the 1924 legal description began at Station 0 and ended at Sta. 148+77. The drain consisted of 542 feet of tile with the remaining drain consisting of open ditch. The drain has been modified from approximate Sta. 14+57 to Sta. 26+42. This section of drain was modified in the 1950's for the expansion of US 31 and the re-routing of 266th Street at that intersection. This saw the main channel modified and the creation of what is now known as Arm 1. In 1999, the main channel in this area was reconstructed and 152 feet of open ditch was enclosed with RCP. Thus William P. Bennett drain consists of Arm 1- 1070 feet of open ditch; 542 feet of 20" tile; 152 feet of 42" RCP; and 13,795 feet of open ditch.

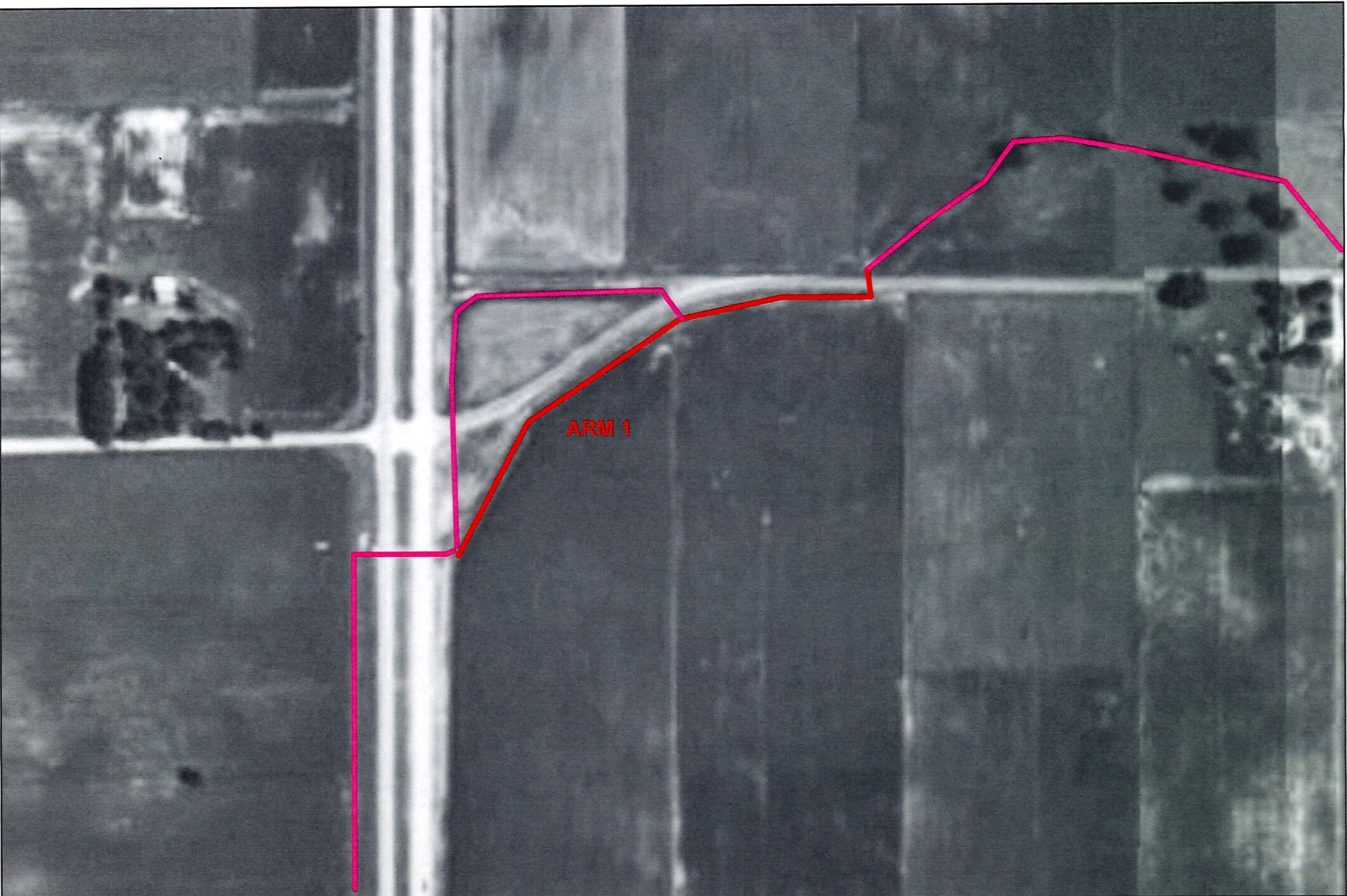
Suzanne L. Mills
GIS Specialist



WP BENNETT DRAIN (2016)



Author: Suzanne L. Mills, GISP
Date: 1/25/2017

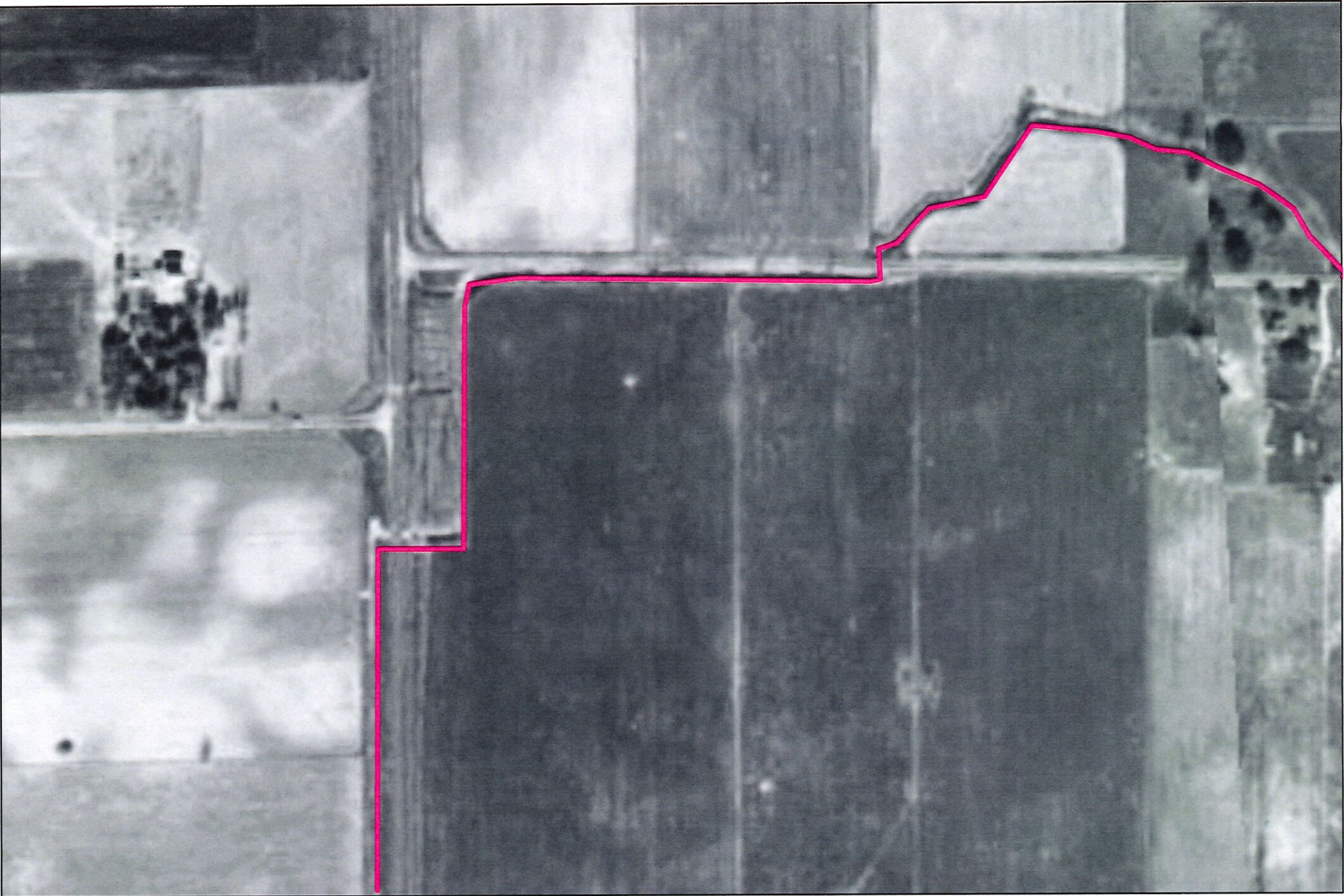


ARM 1

WP BENNETT DRAIN (1962)



Author: Suzanne L. Mills, GISP
Date: 1/25/2017



WP BENNETT DRAIN (1956)



Author: Suzanne L. Mills, GISP
Date: 1/25/2017